

# Your guide to clinical commissioning groups in Leeds

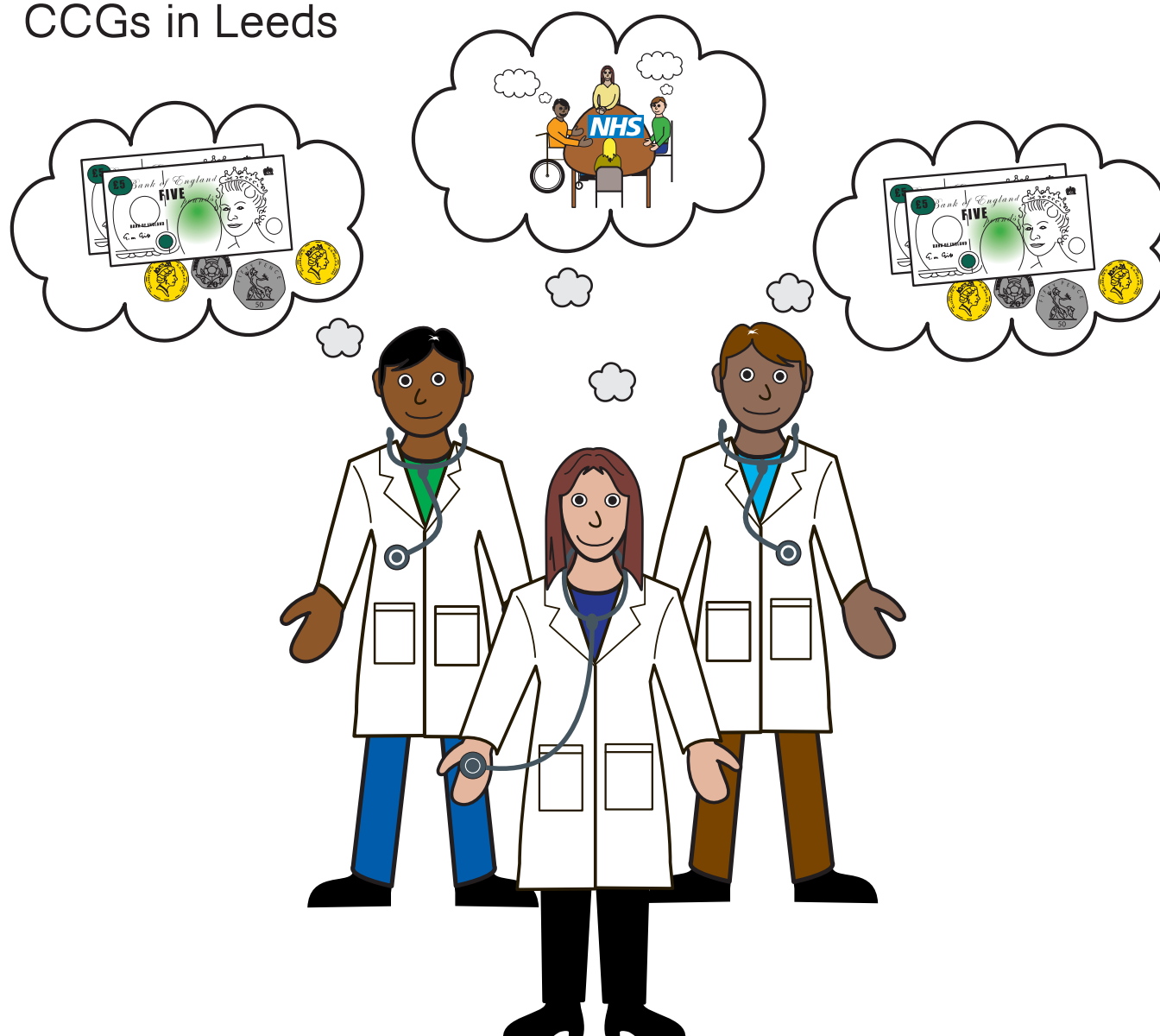


Working towards  
a healthier Leeds

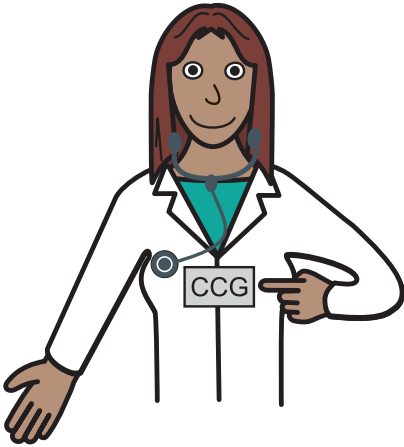
## About this guide

From April 2013 groups of GPs (doctors) and other healthcare professionals are responsible for planning and funding (commissioning) local health services.

These are called Clinical Commissioning Groups CCG. This guide will give you some information about the CCGs in Leeds



## What are Clinical Commissioning Groups (CCGs)?

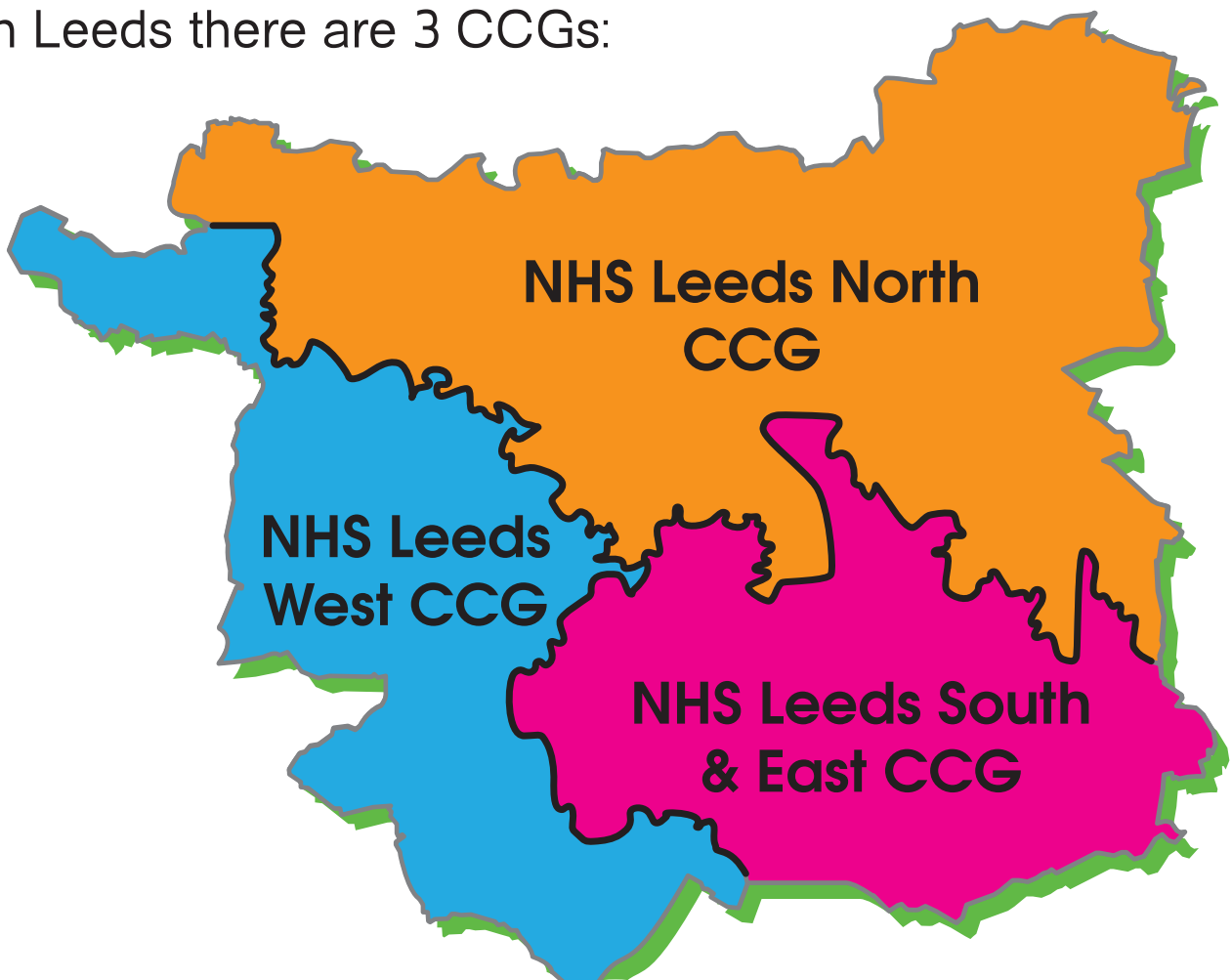


This is a name of a group of GPs and other health professionals who commission (plan and buy) health services for their local communities.

This includes:

- Hospital services
- Community health services
- Mental health and learning disability services
- Emergency and urgent healthcare

In Leeds there are 3 CCGs:



**NHS**  
*Leeds North  
Clinical Commissioning Group*

## **NHS Leeds North CCG**

- Mainly covers the north of Leeds.
- Has 29 GP practices.
- Cover about 201,000 people.

**NHS**  
*Leeds South and East  
Clinical Commissioning Group*

## **NHS Leeds South and East CCG**

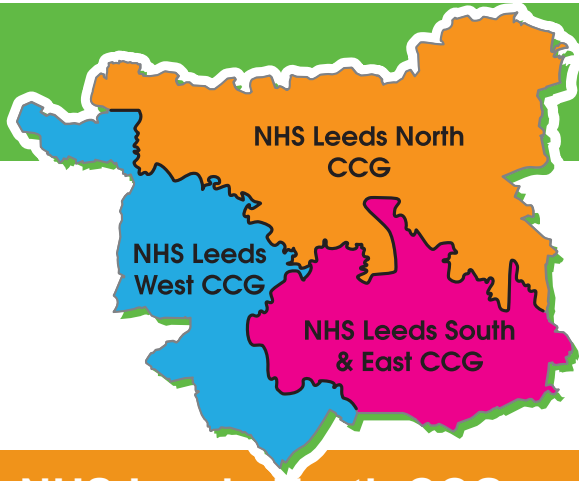
- Covers the south and east of Leeds
- Has 43 GP practices
- Covers about 258,000 people

**NHS**  
*Leeds West  
Clinical Commissioning Group*

## **NHS Leeds West CCG**

- Mainly covers the west of Leeds
- Has 38 GP practices
- Covers about 355,000 people

# Which CCG does your GP practice belong to?



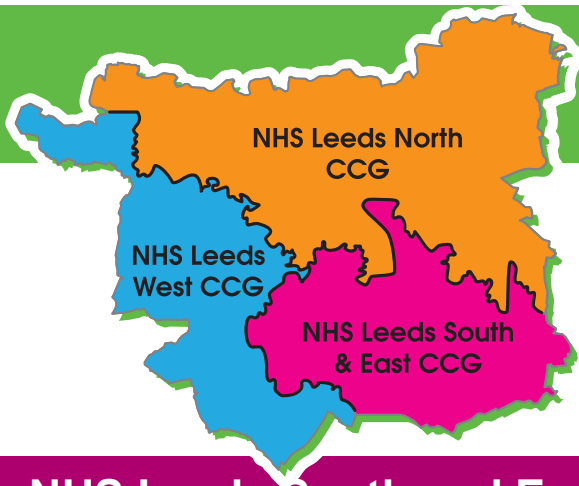
**Leeds North**  
*Clinical Commissioning Group*

## NHS Leeds North CCG

Aireborough Medical Practice  
Allerton Medical Centre  
Bramham Medical Centre  
Charles Street Surgery  
Church View Surgery  
Chevin Medical Practice  
Crossley Street Surgery  
Foundry Lane Surgery  
Dr Gould  
Dr Kinghorn and Partners  
Hilton Road Surgery  
Meanwood Group Practice  
Moorcroft Surgery  
Newton Surgery  
North Leeds Medical Practice  
Street Lane Practice.

Oakwood Surgery  
Oakwood Lane Surgery  
One Medicare @ The Light  
Rutland Lodge Medical Practice  
Shadwell Lane Medical Centre  
Spa Surgery  
St. Martins Practice  
The Avenue Surgery  
The Surgery at Nursery Lane  
and Adel  
Westfield Medical Centre  
Westgate Surgery  
Wetherby Surgery

## Which CCG does your GP practice belong to?



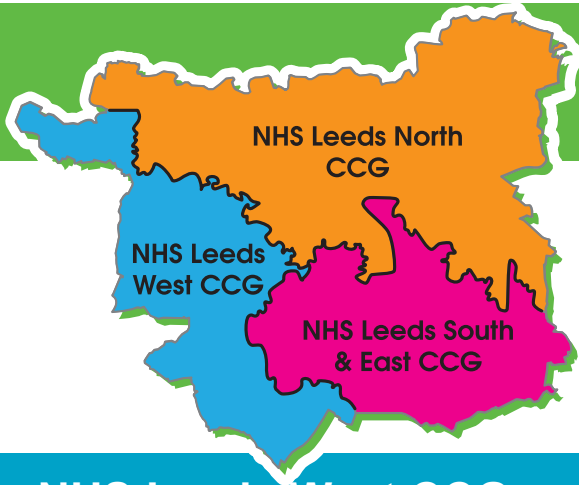
*Leeds South and East  
Clinical Commissioning Group*

### **NHS Leeds South and East CCG**

Arthington Medical Centre  
Ashfield Medical Centre  
Ashton View Medical Centre  
Austhorpe View  
Beeston Village  
Bellbrooke Surgery  
Church Street Surgery  
Church View Surgery  
City View Medical Practice  
Colton Mill Medical Centre  
Conway Medical Centre  
Cottingley Surgery  
Crossland Surgery  
East Park Medical Centre  
Elmwood Surgery  
Garforth Medical Centre  
Gibson Lane Practice  
The Grange Medical Centre  
Halton Clinic  
Harehills Corner  
Hunslet Health Centre  
Jessamine Cottage Surgery  
Kippax Hall Surgery  
Leeds City Medical Practice  
Lincoln Green  
Lingwell Croft Surgery  
Lofthouse Surgery

Manston Surgery  
Marsh Street Surgery  
Middleton Park Surgery  
Moorfield House Surgery  
New Cross Surgery  
Nova Scotia Medical Centre  
Oakley Medical Practice  
Oulton Medical Centre  
Park Edge Practice  
Parkside Surgery  
Radshan Medical Centre  
Richmond Medical Centre  
Rookwood Medical Centre  
Roundhay Road Surgery  
Shaftesbury Medical Centre  
Shafton Lane Surgery  
Shakespeare Medical Practice  
Swillington Surgery  
The Whitfield Practice  
The Surgery, Aberford  
The Manse Surgery  
Whinmoor Surgery  
Windmill Health Centre  
York Road Medical Centre  
York Street Health Practice

## Which CCG does your GP practice belong to?



**NHS**

**Leeds West**

*Clinical Commissioning Group*

### NHS Leeds West CCG

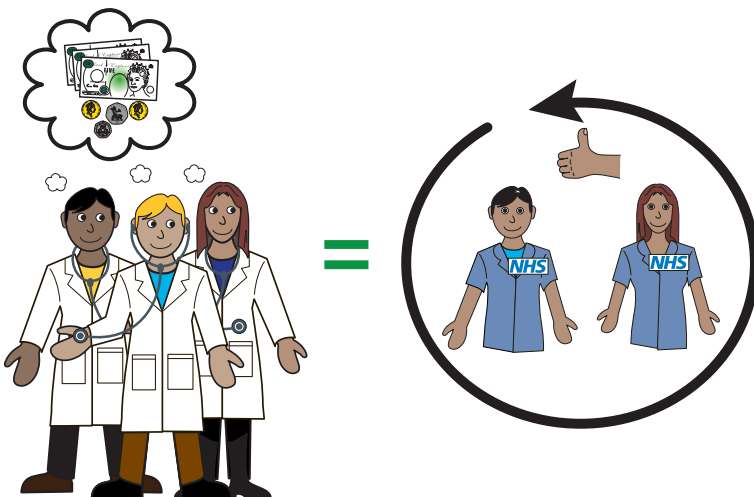
Abbey Medical Centre  
Armley Medical Centre  
Burley Park Medical Centre  
Burton Croft Surgery  
Craven Road Medical Practice  
Drighlington Health Centre  
Fieldhead Surgery  
Fountain Medical Centre  
Gildersome Health Centre  
Hawthorn Surgery  
Highfield Surgery  
Hillfoot Surgery  
Hyde Park Surgery  
Ireland Wood & Horsforth Medical Practice  
Kirkstall Lane Medical Centre  
Laurel Bank Surgery  
Leeds Student Medical Practice  
Leigh View Medical Centre  
Manor Park Surgery  
Moor Grange  
Morley Health Centre  
Priory View Medical Centre  
Pudsey Health Centre  
Rawdon Surgery  
Robin Lane Medical Centre  
Sunfield Medical Centre  
The Beech Tree Medical Centre  
The Gables Surgery  
The Highfield Medical Centre  
The Surgery (South Queen Street)  
Thornton Medical Centre  
Vesper Road Surgery  
West Lodge Surgery  
Whitehall Surgery  
Windsor House Group Practice  
Yeadon Health Centre  
Yeadon Tarn Medical Practice

# What is commissioning?

It is a way of deciding how money should be spent on health services.



Commissioning healthcare and health services looks at:



- The healthcare needs of the area
- The way healthcare services are delivered
- The best way to use healthcare resources



This means services meet the needs of the people in the community.



## What do the changes mean?



You will not notice any difference when you visit your GP now.

There might be some changes later which will be better for you.

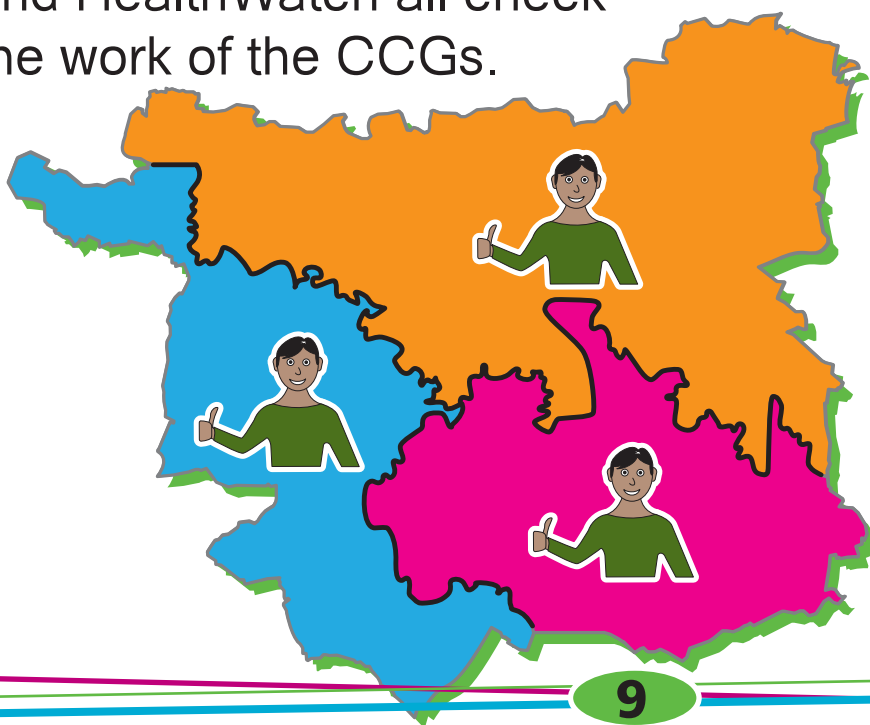
Care might be closer to your home. You may be offered different types of care.

## With 3 CCGs covering the Leeds area, won't some places have better services than others?

The CCGs will work together to make sure everyone has the same access to services across the city.

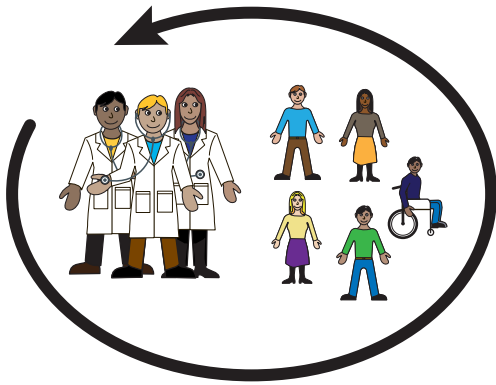
The Leeds Clinical Commissioning Group Network (LCCGN) will meet regularly to make sure the CCGs are working together.

The Leeds Health and Wellbeing Board, NHS England and HealthWatch all check the work of the CCGs.



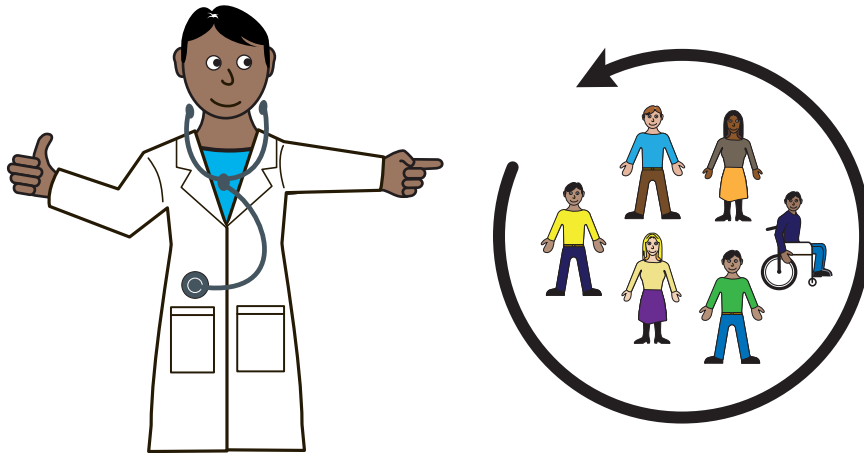
We will consult with patients, public, staff and other partners about services in the city.

## I've heard some services will be much more local, what does this mean?

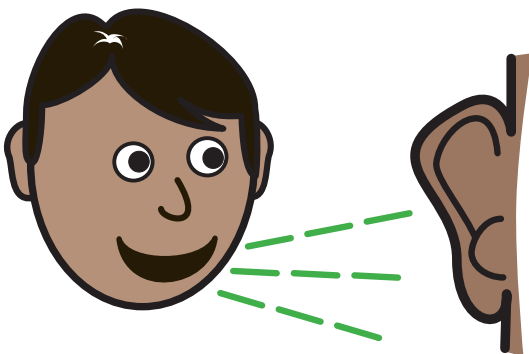


Some services may be provided by GP practices if a lot of people in one area have the same needs. The decision to do this will be based on what local people need and feedback from our patients and staff.

## If GPs are busy commissioning, does this mean they will lose touch with their patients?

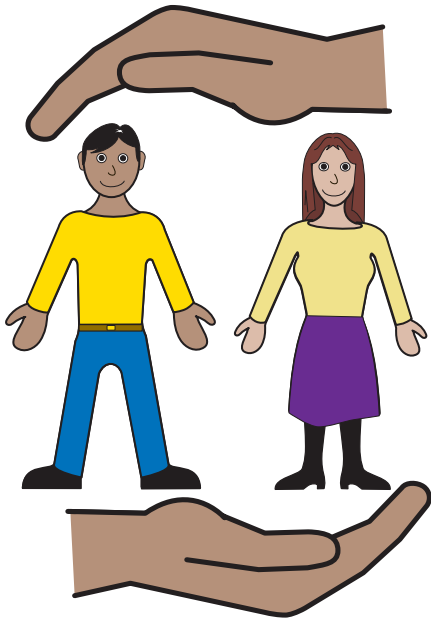


GPs are putting patients at the centre of the decisions they make.



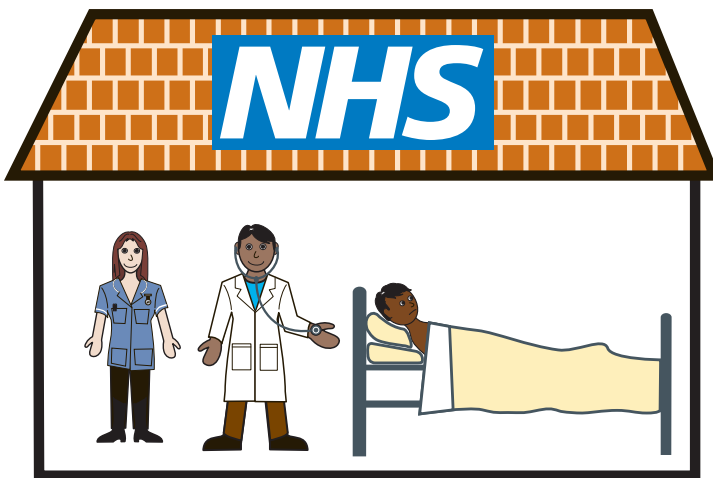
It is important they hear what people think when they are planning services for the future.

## Will my GP be able to fund any treatment I want?



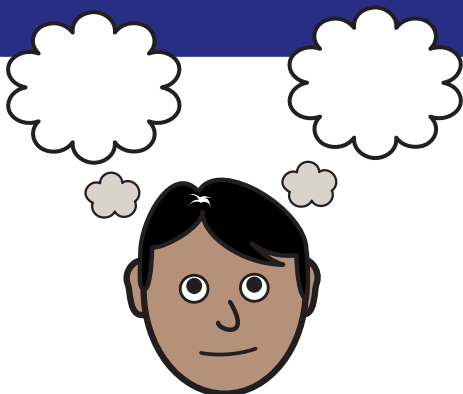
GPs will be important in deciding what the priorities are for the healthcare of their patients but they will not be able to make funding decisions on a patient by patient basis.

## What does this mean for treatment I receive at hospital?



You should not notice a difference in the way care is offered and provided by hospitals.

## choose and book



The Choose and Book system will still be available.

## What happens if I need emergency treatment?



There will not be any difference in emergency treatment.

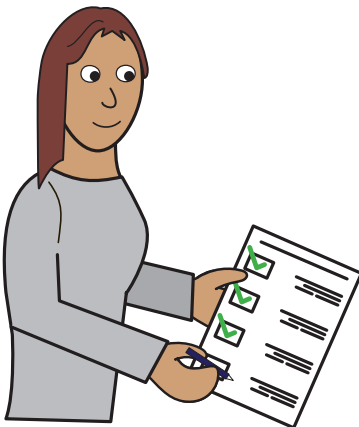


when it's less urgent than 999

You will still be able to call 999 or get to accident & emergency.

For less life threatening conditions you can call NHS 111.

## Who will check on the CCGs?



NHS England and Leeds Health and Wellbeing Board will be checking the work of the CCGs.

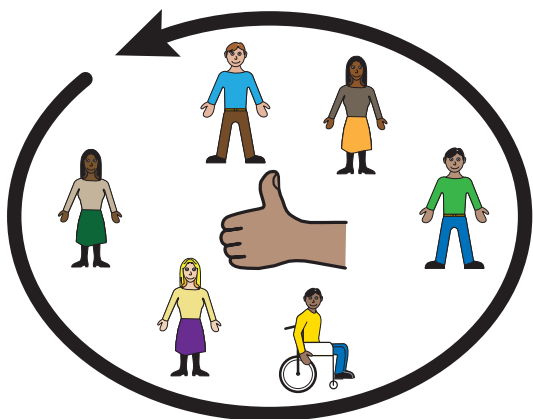
## Will people have a say?



Yes. Patients are important in planning services.

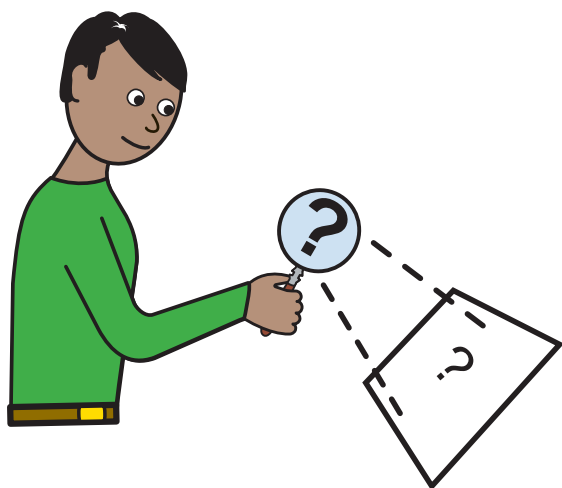
CCGs will include and involve patients and let them know about any changes to services so they can have a say.

## The 3 CCGs in Leeds - working with patients



The 3 CCGs in Leeds are working with patients, patient support groups and community and voluntary organisations so they know what people are saying.

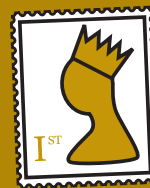
## How can I find out more about my CCG and have my say?



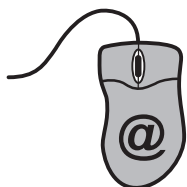
All CCGs in Leeds want to work with patients and local people to make sure they deliver good services.

The ways you can get involved are on the next pages.

**NHS Leeds North CCG**  
**Leaffield House,**  
**107-109 King Lane,**  
**Leeds**  
**LS17 5BP**



**0113 843 2900**



email:  
**leedsnorthccg@nhs.net**

website:

**www.leedsnorthccg.nhs.uk**

Twitter:

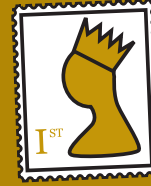
**@NHSLeedsNorth**

Facebook:

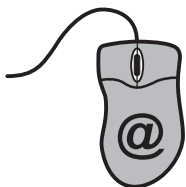
**facebook.com/nhsleedsnorthccg**



**NHS Leeds South and  
East CCG  
2180 Century Way,  
Thorpe Park,  
Leeds,  
LS15 8ZB**



**0113 843 1600**



email:

**leedssouthandeastccg@nhs.net**

website:

**www.leedssouthandeastccg.nhs.uk**

Twitter

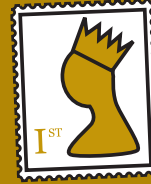
**@NHSLeedsSE**

Facebook:

**facebook.com/NHSLeedsSouthan-  
dEastCCG**



**NHS Leeds West CCG**  
**Unit 2 - 4,**  
**WIRA House Business Park**  
**West Park Ring Road,**  
**Leeds**  
**LS16 6EB**



**0113 843 5470**

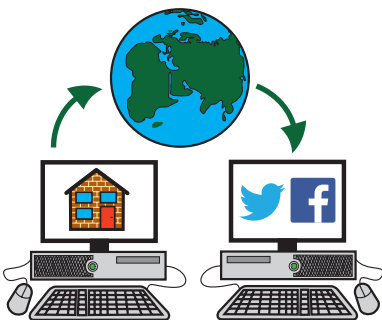


email:  
**leedswestccg@nhs.net**

website:  
**www.leedswestccg.nhs.uk**

Twitter  
**@NHSLeedsWest**

Facebook:  
**facebook.com/NHSLeedsWestCCG**



Designed by **easy on the i**. All our images copyright © LYPFT



